

MISSION BAY CITIZENS ADVISORY COMMITTEE

Thursday, March 12, 2014 - 5:00 PM

Mission Creek Senior Community – Creek Room
225 Berry Street

AGENDA

Please see attached map for location of projects

MEMBERS

Corinne Woods,
Chair

Kevin Simons,
Vice-Chair

Kevin Beauchamp
Sarah Davis
Dan Deibel
Donna Dell'Era
Alfonso Felder
Michael D. Freeman
Tom Hart
Andrea Jones
Toby Levine
JoAnn Locke
Dick Millet
Jennifer Pratt Mead
Catherine Sharpe
Milena Elperin

1. **Introductions and Announcements** – 5 minutes
2. **Action Item: Presentation on the Schematic Designs for the Eastside of the Golden State Warriors Project** – Golden State Warriors Design Team – 75 minutes
Description of Item: Presentation by the Golden State Warriors on the schematic design for the eastern side of the site (Blocks 29-32). The eastern side includes the event center/arena; the retail along Terry François Boulevard, including the Food Hall, and the associated landscaping. The schematic designs will build upon the designs discussed during the Major Phase in fall of 2014. The western portion of the project, including the office buildings and 3rd Street plaza will be presented at the next CAC meeting.
3. **Mission Bay Development Group (MBDG) Update** – 10 minutes
 - **Park P5, Dog Park Design Update:** MBDG will present minor design changes to the future Dog Park (located northwest of the Children's Park on El Dorado Street between Long Bridge and Channel Streets) that was reviewed by the CAC in 2005.
4. **Office of Community Investment and Infrastructure (OCII) Update** - 10 minutes
 - **Block 3 East Affordable Housing Update** – OCII will begin the developer selection process this Spring for the next affordable housing project, located on Block 3East, for the development of a 101-unit affordable project for formerly homeless veterans (including both male and female veterans) and low-income veteran families. This will be an extension of Mayor Ed Lee's ongoing commitment to President Obama to end chronic veteran's homelessness by the end of 2015.
5. **Chair Update** - 5 minutes
6. **Public Comment** (Persons wishing to address the members on non-agenda, but CAC related matters) – 5 minutes

Opportunities for Public Comment are provided after CAC member discussion of each agenda item. Pursuant to the Brown Act, the CAC limits the amount of time allocated for each speaker on particular issues to no more than 3 minutes.

Room Directions: Please note that we meet in the Creek Room at Mission Creek Senior Community, 225 Berry Street at 4th Street. The entrance to the room is off the promenade along the creek, at the back of the building, near the library. Parking is limited to on-street parking, so we strongly encourage that you walk, bike, or use transit (the closest transit is the N-Judah or K/T-Third to 4th and King)

Contact: Lila Hussain, Asst. Project Manager at 415-749-2431 or at lila.hussain@sfgov.org for more information about Mission Bay
Office of Community Investment and Infrastructure (OCII)
Successor Agency to the San Francisco Redevelopment Agency of the City and County of San Francisco
One South Van Ness Avenue, 5th Floor, San Francisco, CA 94103, 749-2400



LEGEND:

- Public Facility
- Parks
- Retail
- Residential / Market Rate
- Residential / Affordable
- Hotel / Residential
- UCSF Campus
- UCSF Medical Center
- Commercial Office

MISSION BAY

LAND USE PLAN

MAY 1, 2014



0 200 800
100 400



Mission Bay Blocks 29-32 (EAST SIDE)

GSW Event Center and Mixed-Use Development

Schematic Design Presentation

March 12, 2015

Site Plan (December 2014)

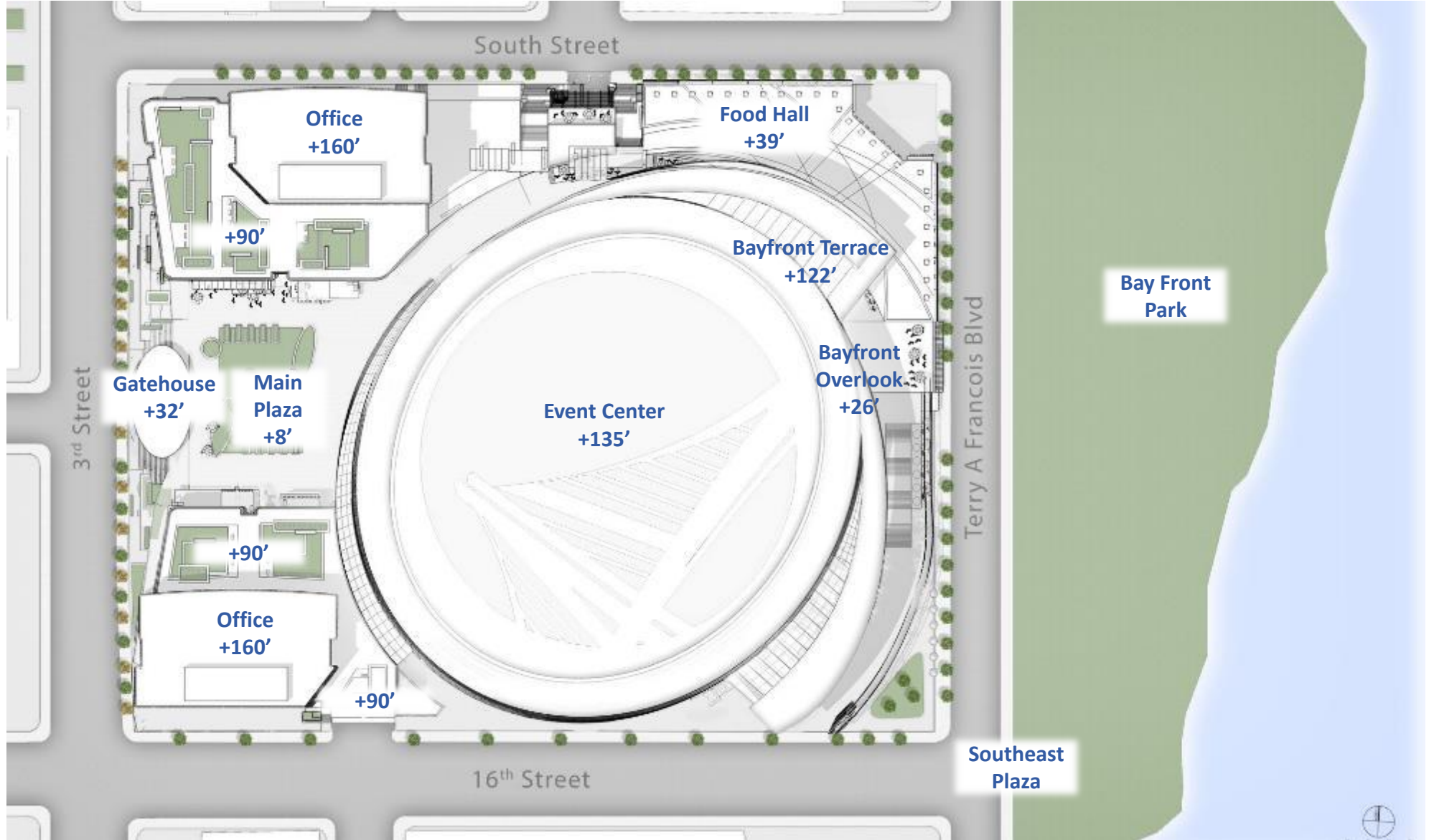




Image Courtesy of MANICA Architecture. Rendering by steelblue P22 Park to be designed at a later date by others. Rendering reflects artistic representation only





Image Courtesy of MANICA Architecture. Rendering by steelblue P22 Park to be designed at a later date by others. Rendering reflects artistic representation only





Image Courtesy of MANICA Architecture. Rendering by steelblue P22 Park to be designed at a later date by others. Rendering reflects artistic representation only



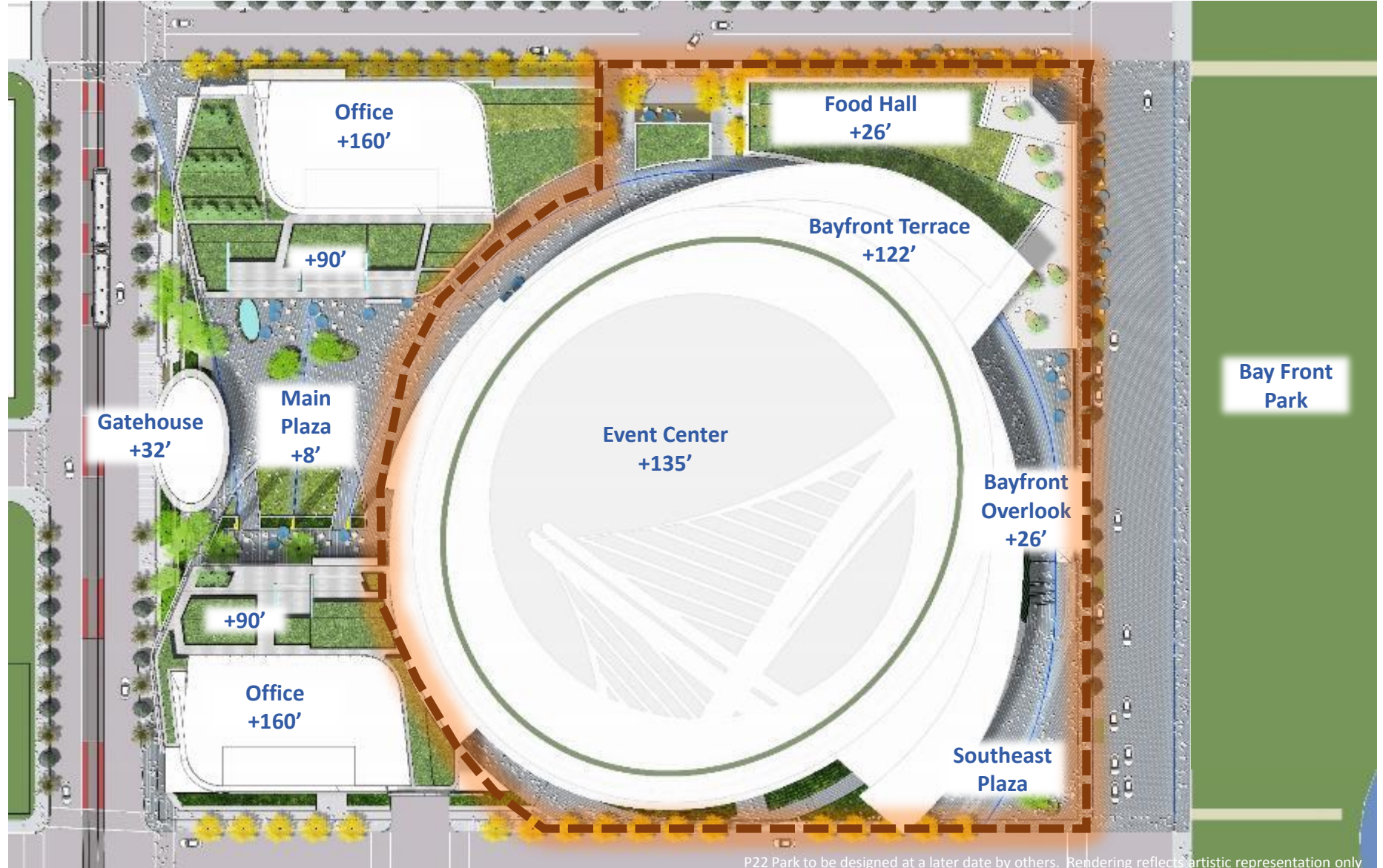


Image Courtesy of MANICA Architecture. Rendering by steelblue



Site Plan (March 2015)

Today's Presentation will focus on the EAST side of the site only.



Arena Materials

Three Basic Materials:

“Clear” Glass

(will be treated for energy efficiency and bird strike prevention)

Metal Panel

(rain screen system with fixed % of perforation pattern)

GFRC

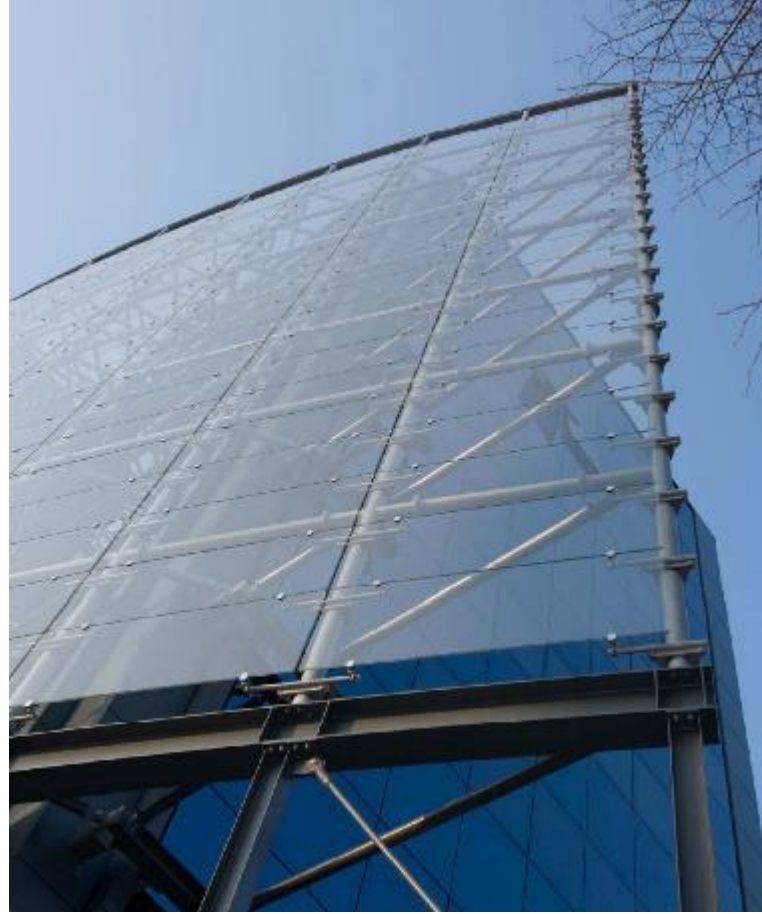
Glass Fiber Reinforced Concrete
(located at pedestrian level for durability, texture, and color)



Arena Materials

“Clear” Glass

(will be treated for energy efficiency and bird strike prevention)



Arena Materials

“Clear” Glass

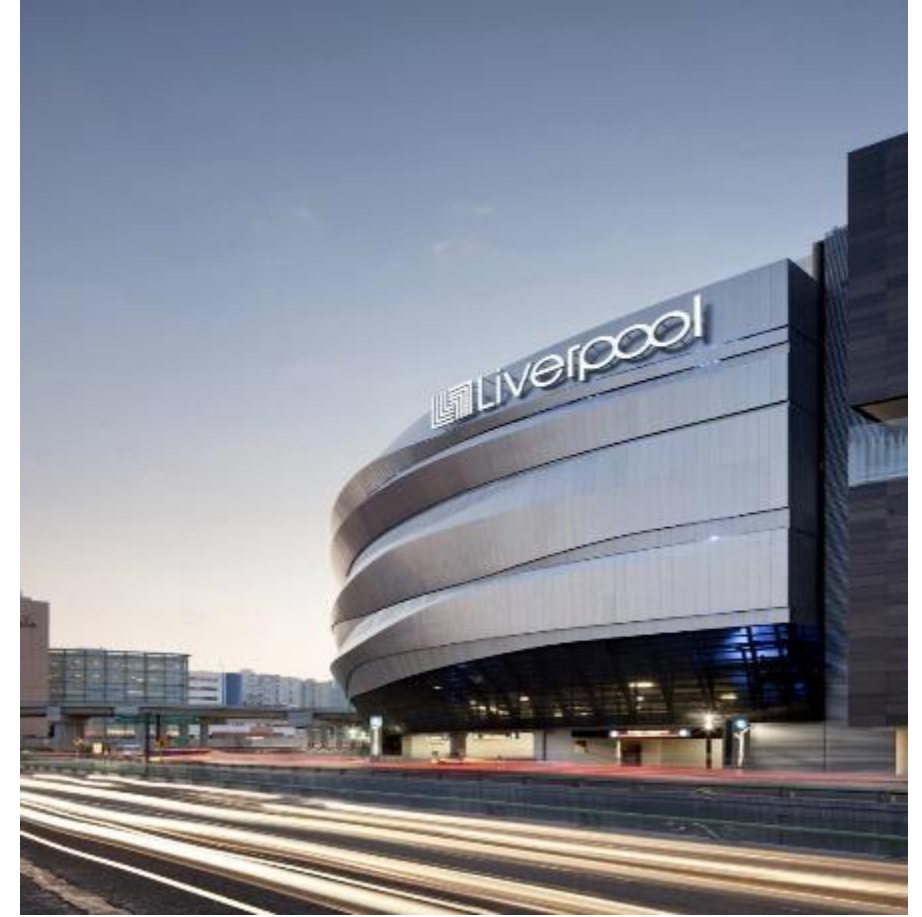
(will be treated for energy efficiency and bird strike prevention)



Arena Materials

Metal Panel

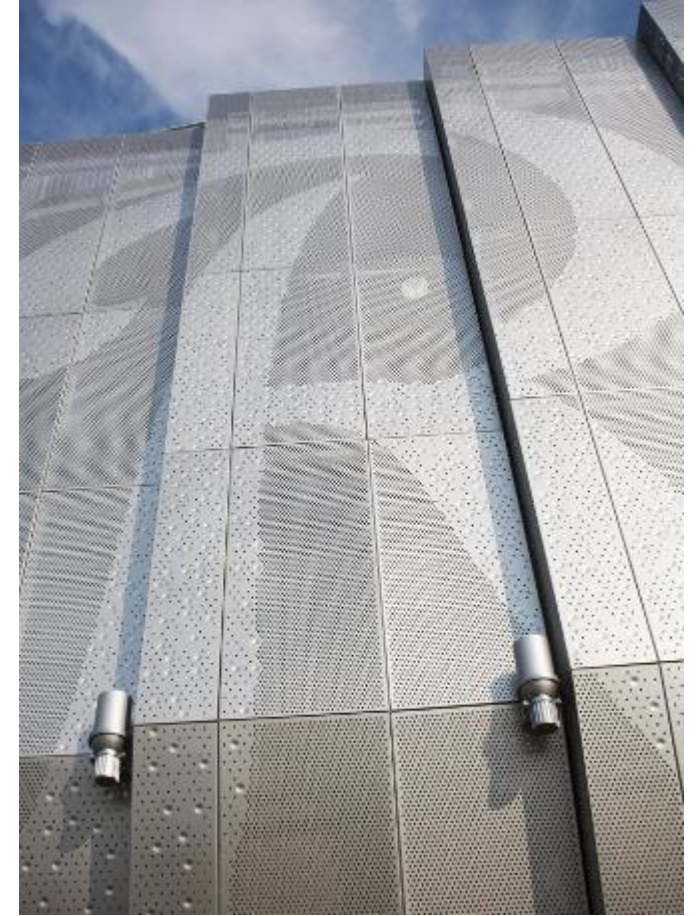
(rain screen system with fixed % of perforation pattern)



Arena Materials

Metal Panel

(rain screen system with fixed % of perforation pattern)



Arena Materials

Metal Panel

(rain screen system with fixed % of perforation pattern)



Arena Materials

GFRC

Glass Fiber Reinforced Concrete

(located at pedestrian level for durability, texture, and color)

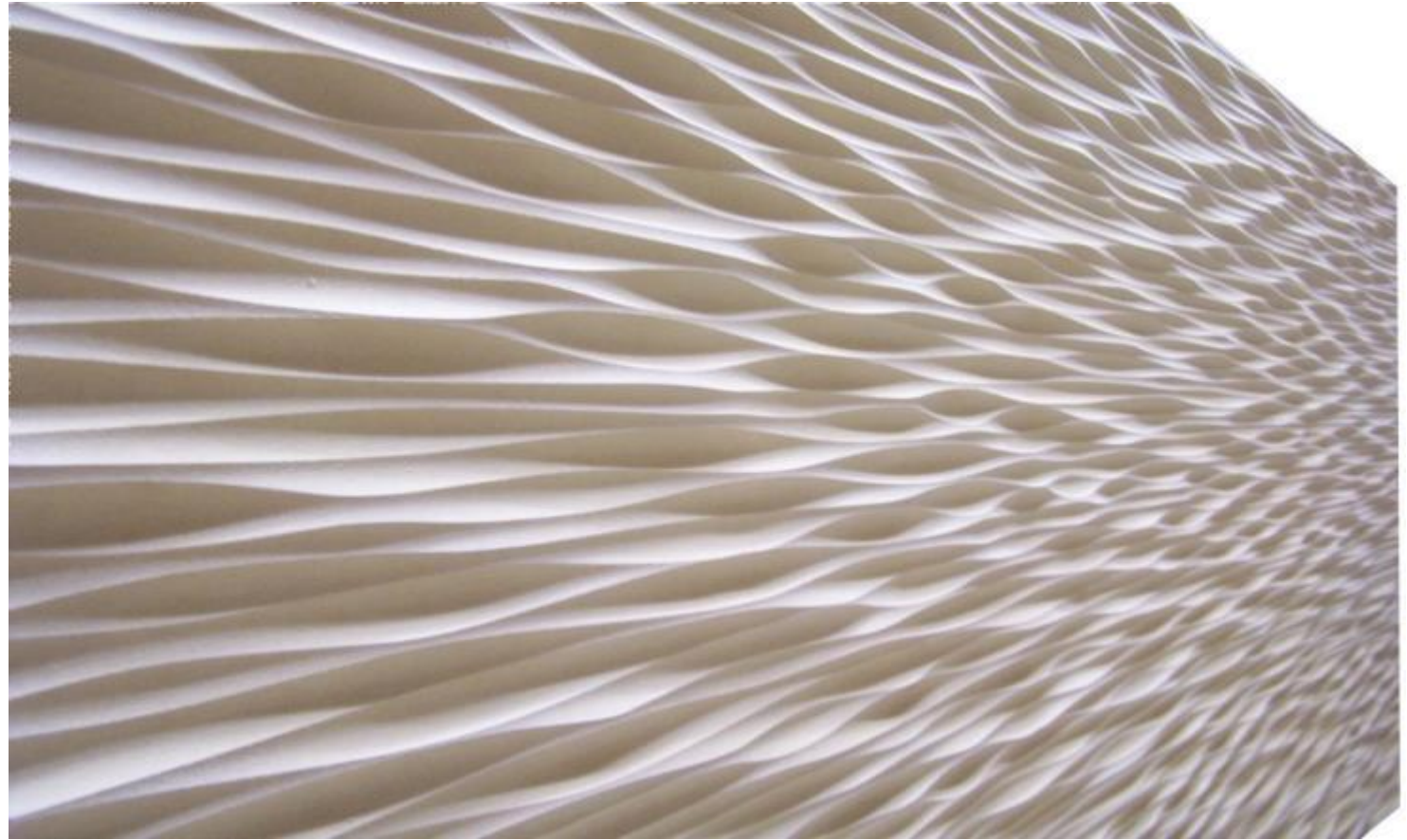


Arena Materials

GFRC

Glass Fiber Reinforced Concrete

(located at pedestrian level for durability, texture, and color)



Arena Materials

GFRC

Glass Fiber Reinforced Concrete

(located at pedestrian level for durability, texture, and color)



Retail/Food Hall Materials

Three Basic Materials:

“Clear” Glass

(will be treated for energy efficiency and bird strike prevention)

Stone/Concrete Panels

Metal Storefronts



Retail/Food Hall Materials

Three Basic Materials:

Stone/Concrete Panels



“Clear” Glass

(will be treated for energy efficiency and
bird strike prevention)

Metal Storefronts



Southeast Plaza



SouthEast Plaza



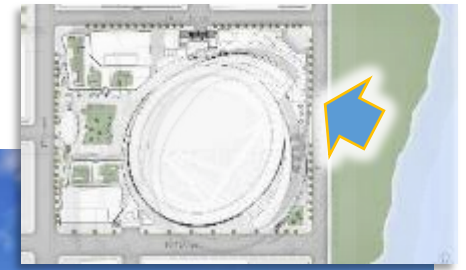
Terry Francois Boulevard



Terry Francois Boulevard



Terry Francois Boulevard



Terry Francois Boulevard/Food Hall



The Food Hall



South Street



South Street



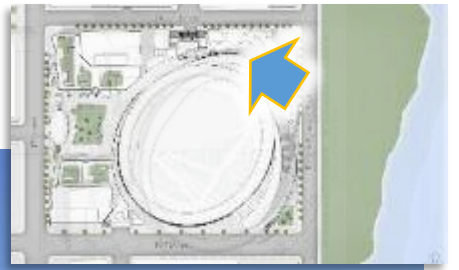
Pedestrian Pathway



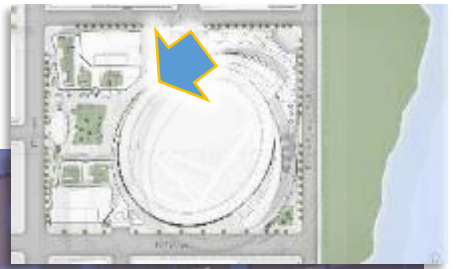
Pedestrian Pathway



Pedestrian Pathway



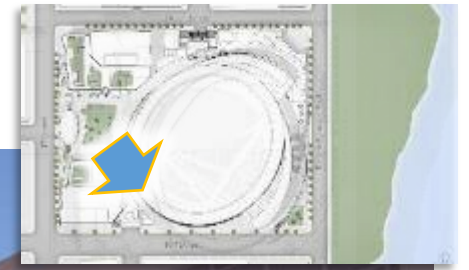
Pedestrian Pathway



Plaza Entrance



Atrium onto 16th Street



16th Street



16th Street Bike Valet



Southeast Plaza



CAC Next Steps

- Upcoming CAC meetings:
 - April 9th – Westside Schematic design
 - April 30th (tentative) – Pre - and post-event management strategies
 - Late Spring/Early Summer – Transportation and construction planning updates
- OCII/Planning Commission Schematic Design Workshop Spring 2015
- Draft EIR Released late spring





Thank You

visit <http://www.nba.com/warriors/sf> or <http://sfocii.org/index.aspx?page=61> for more information